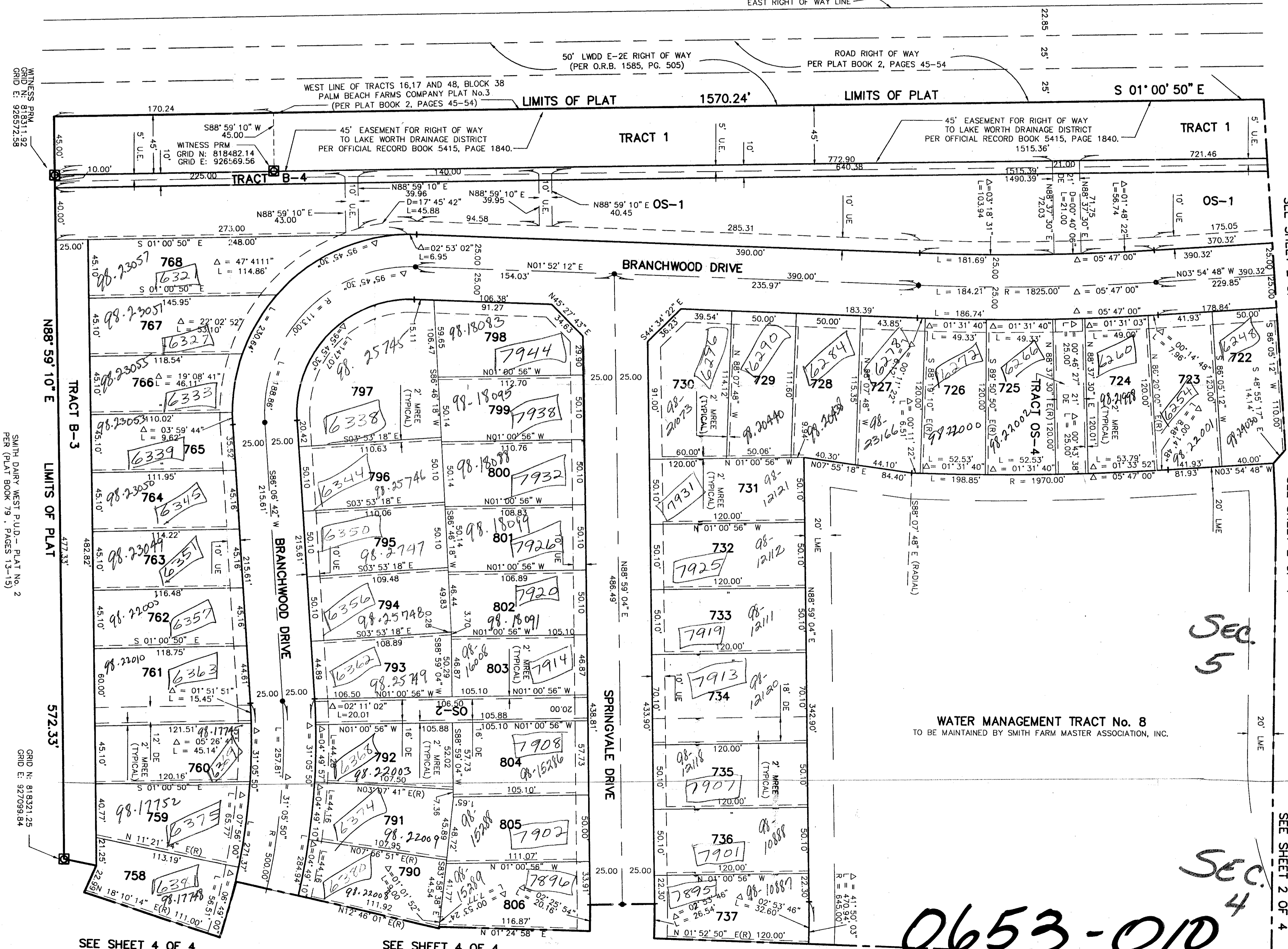
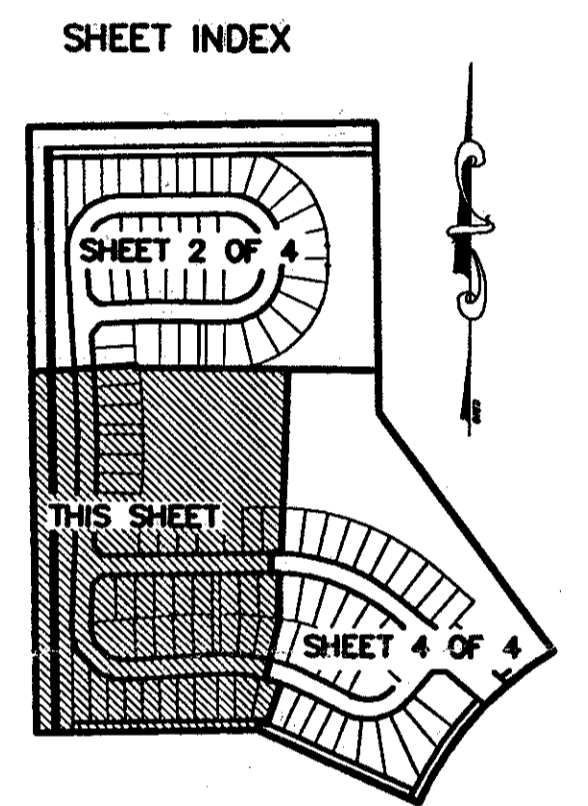


SMITH DAIRY WEST P.U.D.-PLAT No. 6
 BEING A REPLAT OF PART OF BLOCK 38 OF PALM BEACH FARMS
 COMPANY PLAT No. 3, AS RECORDED IN PLAT BOOK 2, PAGES
 45 THROUGH 54 OF THE PUBLIC RECORDS OF PALM BEACH COUNTY, FLORIDA
 IN PART OF SECTION 4 AND 5, TOWNSHIP 45 SOUTH, RANGE 42 EAST,
 PALM BEACH COUNTY, FLORIDA
 SHEET 3 OF 4
 AUGUST 1997

SUNSHINE STATE PARKWAY
 PER THE 1955 RIGHT OF WAY MAP
 PREPARED BY GANNETT, FLEMING, CORDRY & CARPENTER, INC.
 SHEET B OF 13
 EAST RIGHT OF WAY LINE

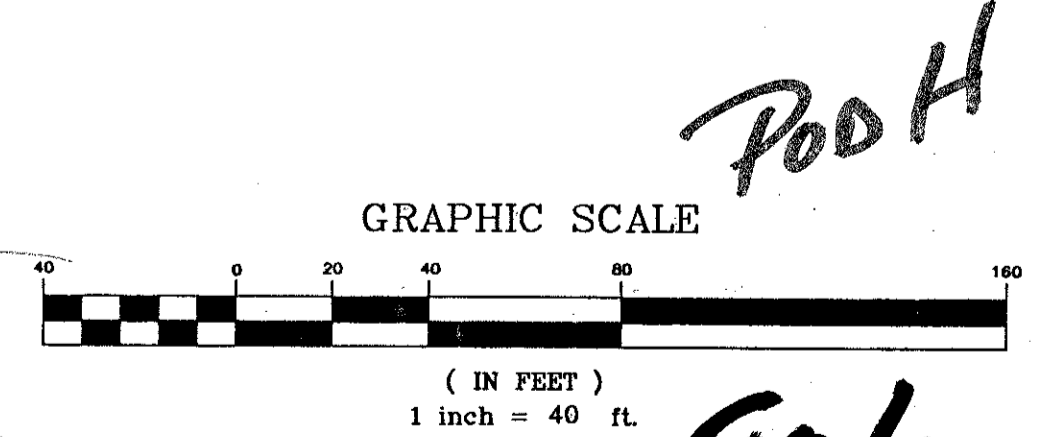


*PET. 94-77
 AWDC #0001
 5/2/21*



Sec. 5

- LEGEND:**
- ◻ = PERMANENT REFERENCE MONUMENT "P.L.S. 4828"
 - ◻ = PERMANENT CONTROL POINT "P.C.P. 4828"
 - R = RADIUS
 - Δ = ARC LENGTH
 - PC = POINT OF CURVATURE
 - PT = POINT OF TANGENCY
 - PSM = PROFESSIONAL SURVEYOR & MAPPER
 - PLS = PROFESSIONAL LAND SURVEYOR
 - UE = UTILITY EASEMENT
 - DE = DRAINAGE EASEMENT
 - LME = LAKE MAINTENANCE EASEMENT
 - N = NORTHING (GRID)
 - E = EASTING (GRID)
 - (C) = CALCULATED
 - (R) = RADIAL
 - MREE = MAINTENANCE AND ROOF EAVE EASEMENT



Pool

82/36

Sec. 5

Sec. 4

0653-010

112, 942

SMITH DAIRY WEST P.U.D. - PLAT No. 6
 PAGE 36
 FLOOD ZONE # 1/10/11
 ZONING PUD
 ZIP CODE 33411
 GE 94-L-7
 PLO NAME Smith Dairy West

SUSPENSION
 ROCK BA
 FLOOD ZONE # 1/10/11
 ZONING PUD
 ZIP CODE 33411
 GE 94-L-7
 PLO NAME Smith Dairy West

SEE SHEET 4 OF 4

SEE SHEET 4 OF 4

SEE SHEET 4 OF 4

SEE SHEET 4 OF 4

SCALE: 1"=40'
 DATE: AUGUST 1997

NICK MILLER, INC.
 Surveying & Mapping Consultants

SMITH DAIRY WEST P.U.D.- PLAT No. 6

2560 RCA Blvd, Suite 105
 Palm Beach Gardens, Florida 33410
 (561) 627-5200
 D.B.P.R. Business License No. 4318

DRAWING NUMBER
 94014BT